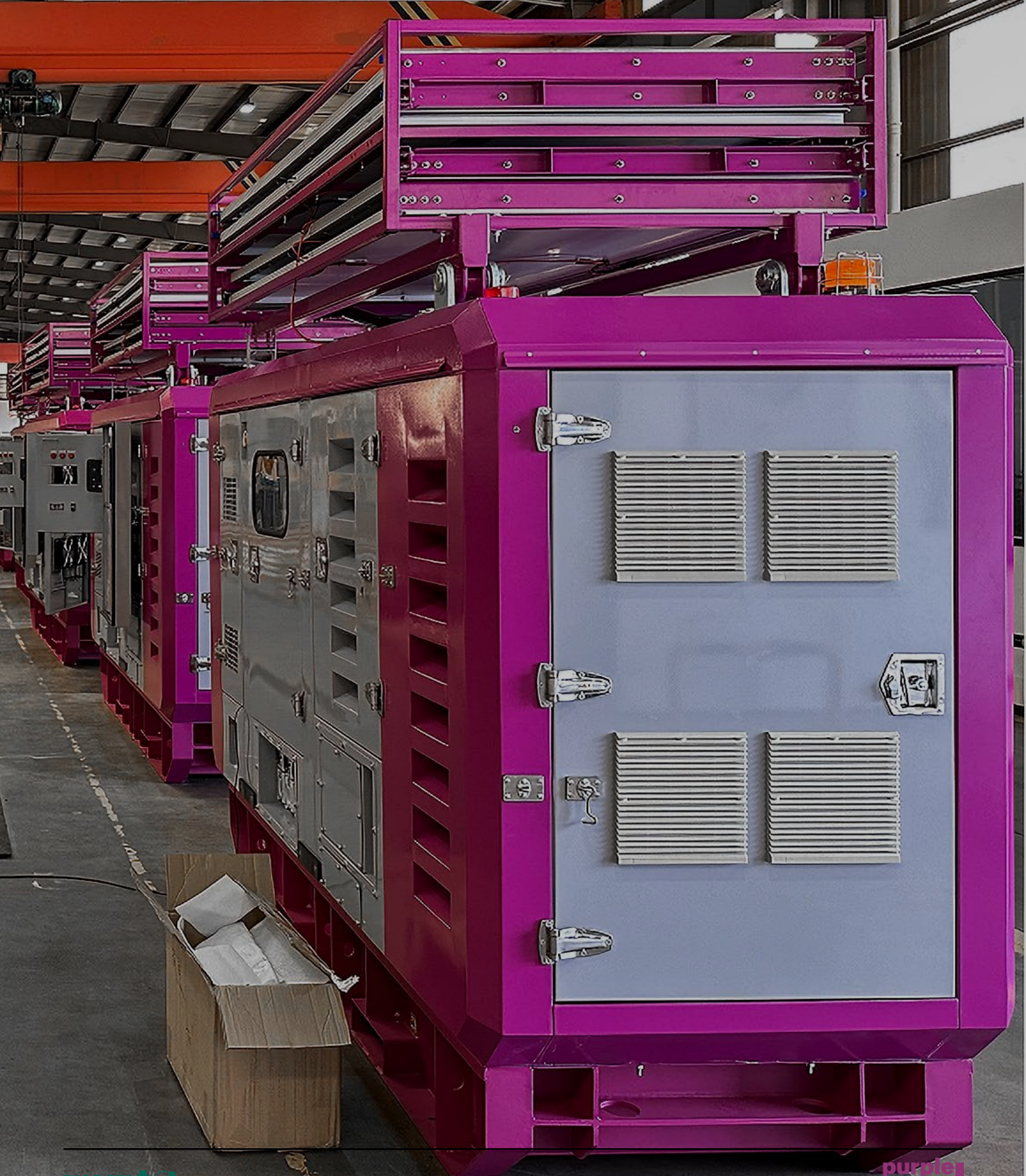


# Purple POD

Spec Sheet Range





# purple pod 10



## Easy, Fast Set-Up

- Compact design for freight and storage
- One touch battery hydraulic deployment of solar panel array
- Deep Sea control system
- Outlet kit for plug and play operation

## Reduced Carbon And Cost

- Up to 85% reduction in generator run time
- Up to 90% reduction in emissions
- Latest inverter-battery technology
- 50% + fuel cost reduction

## Easy Maintenance

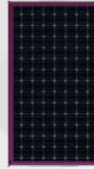
- Single side servicing
- External drain points access
- Full access to engine
- Full access to inverter/battery bay

## You're In Control

- Remote monitoring
- Detailed diagnostics
- Programmable gen/inverter run time

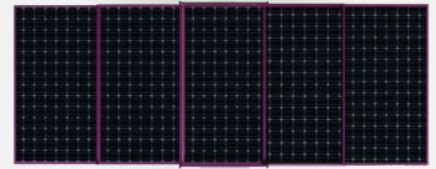
## General Specifications

Model	<b>POD - 10</b>
System Rated Output Power	10 kVA
Rated Output Voltage	400V/230V@50Hz/60Hz
Min.Battery Storage Capacity	10 kWh
Max.Battery Storage Capacity	25 kWh
Output Terminals	Copper terminals & CEE 16A/5P Socket
Expand Dimension(W*D*H)	2950 x 5400 x 3350mm
Loading Dimension(W*D*H)	2950 x 1150 x 2200mm
Net Weight (Kg)	2800kg
Loading Capacity of 40'HC	8 units
Discharge Temperature Range °C	-20 to 50



Loading Dimension(W\*D\*H)

2950 x 1150 x 2200mm



Expand Dimension(W\*D\*H)

2950 x 5400 x 3350mm

## Generator Set

Prime Power	10 kVA
Fuel Consumption	2.6 L/h@100% load
Fuel Type	Diesel(Nature Gas Engine for option)
Fuel Tank Capacity	36 hours
Base Functions	Automatic Start-up / Alarm / Automatic Stop / Emergency Stop

## Solar Panel

Maximum Power	550W
Power Tolerance	0~+5W
Max-Power Voltage (Vm)	41.96VDC
Max-Power Current (Im)	13.11A
Qty.	5pcs

## Energy Storage Battery

Cell Type	LFP(LiFePO4)
Pack Model	MF51100D
Pack Capacity	5 kWh
Pack Rated Voltage	51.2 VDC
Discharge Depth	90%
Charger/Discharge Current	97.7 A(1.0C)
Battery Rack Voltage	43.2V~59V
Rated Cycle Life	>2000 80% DOD

## Hybrid Inverter System

Solar Controller	MPPT*2
EMS	-
AC Voltage Range	380~415Vac
Max.PV Current	26A*2
Max.Charge/Discharge Current	97.6%
Max.Conversion Efficiency	97.6%
Rated Output Power	10kVA(0.8leading~0.8lagging)

MYNT PRODUCT RANGE:



**GENERATORS 6KVA - 1500KVA**



**STANDBY**



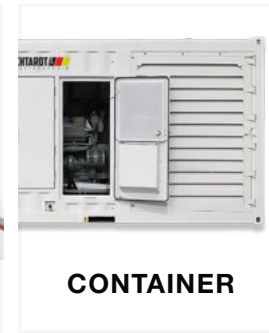
**STATIONARY**



**MOBILE**



**TRAILER**



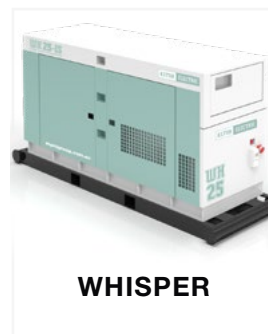
**CONTAINER**



**HEAVY DUTY**



**BIG TANK**



**WHISPER**



**WHISPER BIG TANK**



**INVERTER**

**FUEL CELLS 1KL - 100KL**



**LIFT & SHIFT**



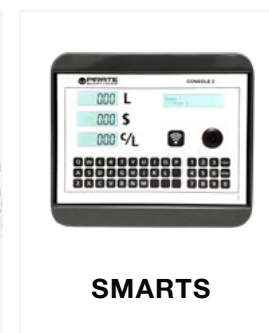
**STATIC STORAGE**



**TOW TANKS**

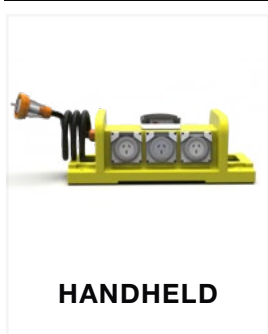


**BULK STORAGE**



**SMARTS**

**DISTRIBUTION 10A - 1000A**



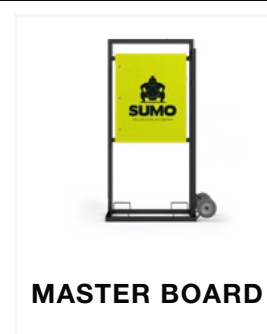
**HANDHELD**



**COMBO**



**STACKABLE**



**MASTER BOARD**



**LOAD BANKS**