

## Static Storage: SS 65

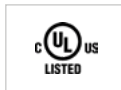
**CONTAINERISED , SELF BUNDED (DOUBLE WALL)**



Containerised Fully Bunded  
(Double Wall)



Storage and Dispensing of Diesel, Lubricants,  
Kerosene, Petrol & Waste Oil



CULUS Listed, tested to UL requirements



### Smarter Fuel Cells

Unique rounded rectangular tank profile maximises the storage capacity of the tank and provides the strength of a cylindrical design. CSC plated as 10ft / 20ft / 40ft / 48ft Standard Container. Lockable Container Doors with option for Roller Door. Supplied with all required statutory safety decals for your region of operation.

### Safer Fuel Cells

Integrated Bunded Pump Bay and Tank Access Platform design providing access to the full tank functionality in one convenient location on the tank. Vent that will relieve the gap between the two tanks in the event of a fire

### Adaptable Fuel Cells

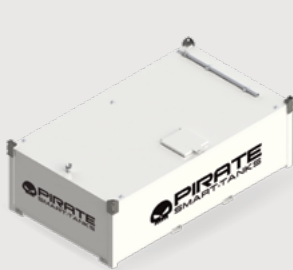
Full under tank visibility allows for regular visual inspect of the tank base and prevents the base rusting by providing for unrestricted air flow under the tank. 2 x 600mm manways with integrated tankaccess ladder assembly. Removable plate to allow the linking of multipl tanks in tank farm applications. Dispensing Equipment housed within a lockable bunded pump bay housing.

### Specifications

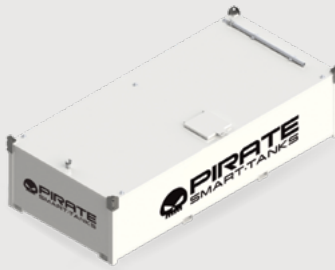
Model	SS 65
Capacity	68,000L
Safe Fill Level	65,570L
Dimensions (mm)	12,192 x 2,438 x 2,896
Empty Weight (kg)	14500
Container Footprint	40FT High Cube
Integrated Pump Bay	Yes

## Static Storage 8KL - 75 KL

Models



SS 8



SS 10



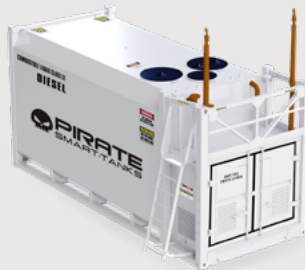
SS 12



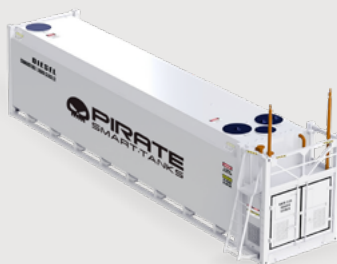
SS 16



SS 30



SS 38



SS 65



SS 75

### DN80

DN80 Fill Point c/w Camlock Male Fitting / Dust Cap / Fire Safe Full Bore Ball Valve / Wafer Style Non Return Valve.

DN80 Suction Outlet c/w Anti Syphon Valve and Two Piece Full Bore Fire Safe Ball Valve.

DN80 Mechanical Overfill Valve + 12V Battery

Operated Overfill Alarm.

### Certifications

Certificate of Compliance #20120912-MH49221 for UL 142, ULC-S601

### Paint

Paint Colour RAL9003 Signal White/ Tanks are sandblasted to SA2 Standard. Hempel Marine Paint 3 Stage process. Primer Hempadur 1530. 2nd Coat Hempadur HiBuild 4520. Final Coat Hemplthane Enamel

55100 Finished dry

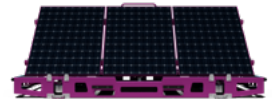
# Other Products Available for sale and rental

purple  
**GlowBug**



Hydrogen Light tower

purple  
**Skidibee**



Stackable Solar

purple



Purple Pod



Purple Cube



Hydrogen

ASTON ELECTRIC



XL SERIES



XL AND WH



WHISPER

FUCHTARDT



Lift & Shift



Static Storage



Containers

PIRATE  
SMART-TANKS



Lift & Shift



Static Storage



Tow tanks

SUMO  
PLUG N PLAY GEAR



Handheld Range



Midsize Distribution



Hardwire