

Lift & Shift:LS 6

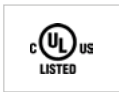
BAFFLED TANKS , 110% SELF BUNDED



Baffled
Can be transported full of fuel



Storage and Dispensing of Diesel, Lubricants,
Kerosene, Petrol & Waste Oil



Culus Listed, tested to UL requirements



Smarter Fuel Cells

- 100% self bunded The outer tank will hold 110% of the inner tank's capacity
- Removable lid for ease of maintenance.
- UN31A/Y approved for the transport of Dangerous Goods by Road, Rail and Sea, Packaging Groups II & III.

Safer Fuel Cells

- Secure hose entry and vexit ports.
- Tank can feed and return from up to 3 generators at once.
- 4 x way forklift pockets.
- Mechanical contents gauge.
- Generator hose suction and return points.
- Supplied with all required statutory decals.

Adaptable Fuel Cells

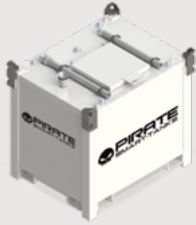
- Fully certified Crane Lifting Lugs, and can be transported and lifted when full of liquid.
- Stackable - 3-high empty and 2-high when full.
- Pumps, connections and hoses are housed and can be locked within the bund, even in use.
- Fully lockable lid on gas struts.

Specifications

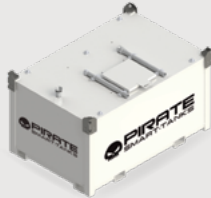
Safe FILL Level (L)	6000
Capacity (L)	6600L
Empty Weight (kg)	6600L
Dimensions (mm)	2966 x 2294 x 1270
Certification	Certificate of Compliance #20121129-MH49493 for UL 142, ULC-S601, and ULC-S653.

Lift & Shift 1KL - 6 KL

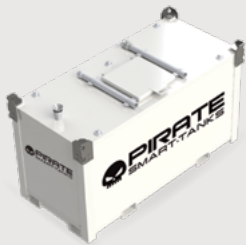
Models



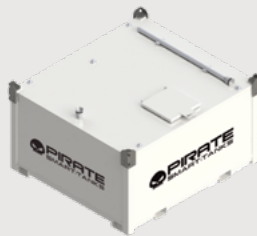
LS1



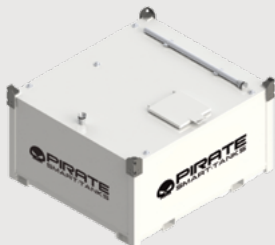
LS2



LS3



LS4

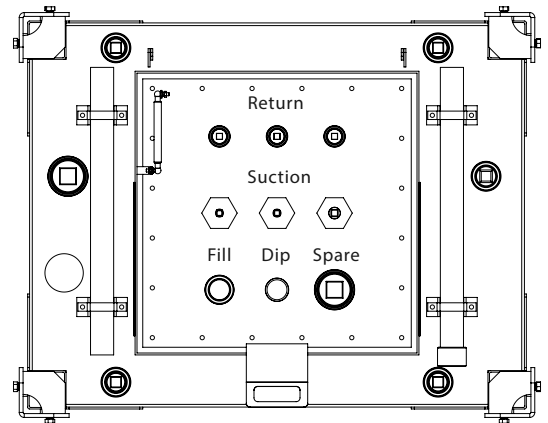


LS6

Certifications

• Unique tank in tank design approved to UL142 / ULCS601 / ULCS603 / AS1940, AS1692 / BS799 / PPG2.

Configuration



TYPICAL INNE TANK CONFIGURATIONS

Option Configurations

- 70LPM Transfer Pump
- Waste Oil Configuration

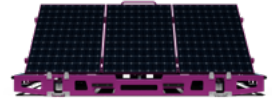
Other Products Available for sale and rental

purple
GlowBug



Hydrogen Light tower

purple
Skidibee



Stackable Solar

purple



Purple Pod



Purple Cube



Hydrogen

ASTON ELECTRIC



XL SERIES



XL AND WH



WHISPER

FUCHTARDT



Lift & Shift



Static Storage



Containers

PIRATE
SMART-TANKS



Lift & Shift



Static Storage



Tow tanks

SUMO
PLUG N PLAY GEAR



Handheld Range



Midsize Distribution



Hardwire