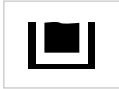


**Lift & Shift:LS 2**

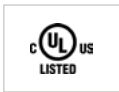
**BAFFLED TANKS , 110% SELF BUNDED**



Baffled  
Can be transported full of fuel



Storage and Dispensing of Diesel, Lubricants,  
Kerosene, Petrol & Waste Oil



Culus Listed, tested to UL requirements



**Smarter Fuel Cells**

- 100% self bunded The outer tank will hold 110% of the inner tank's capacity
- Removable lid for ease of maintenance.
- UN31A/Y approved for the transport of Dangerous Goods by Road, Rail and Sea, Packaging Groups II & III.

**Safer Fuel Cells**

- Secure hose entry and vexit ports.
- Tank can feed and return from up to 3 generators at once.
- 4 x way forklift pockets.
- Mechanical contents gauge.
- Generator hose suction and return points.
- Supplied with all required statutory decals.

**Adaptable Fuel Cells**

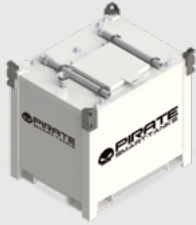
- Fully certified Crane Lifting Lugs, and can be transported and lifted when full of liquid.
- Stackable - 3-high empty and 2-high when full.
- Pumps, connections and hoses are housed and can be locked within the bund, even in use.
- Fully lockable lid on gas struts.

**Specifications**

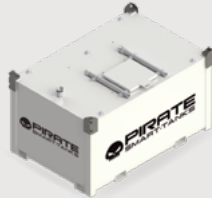
Safe Fill Level (L)	2000L
Capacity (L)	2250L
Empty Weight (kg)	2250L
Dimensions (mm)	2294 x 1086 x 1270
Certification	Certificate of Compliance #20121129-MH49493 for UL 142, ULC-S601, and ULC-S653.

**Lift & Shift 1KL - 6 KL**

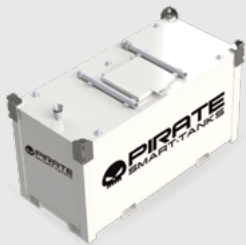
**Models**



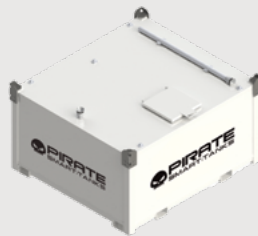
LS1



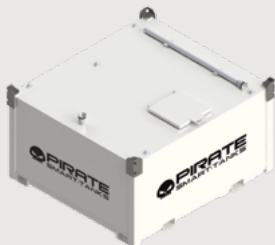
LS2



LS3



LS4

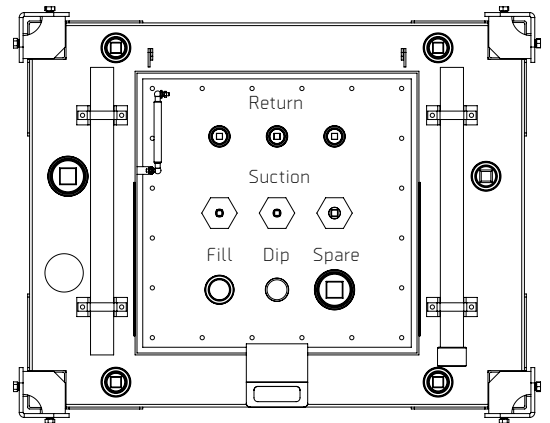


LS6

**Certifications**

•Unique tank in tank design approved to UL142 /ULCS601 / ULCS603 / AS1940, AS1692 / BS799 /PPG2.

**Configuration**



TYPICAL INNE TANK CONFIGURATIONS

**Option Configurations**

- 70LPM Transfer Pump
- Waste Oil Configuration



**FUCHTARDT**



**ASTON ELECTRIC**



**PIRATE SMART-TANKS**



**SUMO**  
PLUG N PLAY GEAR

Product Family

**GENERATORS 6KVA - 1500KVA**



**STANDBY**



**STATIONARY**



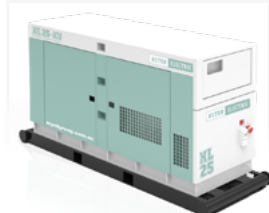
**MOBILE**



**TRAILER**



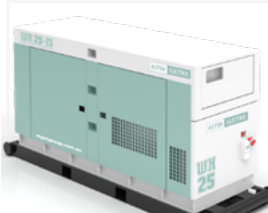
**CONTAINER**



**HEAVY DUTY**



**BIG TANK**



**WHISPER**



**WHISPER BIG TANK**



**INVERTER**

**FUEL CELLS 1KL - 100KL**



**LIFT & SHIFT**



**STATIC STORAGE**



**TOW TANKS**



**BULK STORAGE**



**SMARTS**

**DISTRIBUTION 10A - 1000A**



**HANDHELD**



**COMBO**



**STACKABLE**



**MASTER BOARD**



**LOAD BANKS**