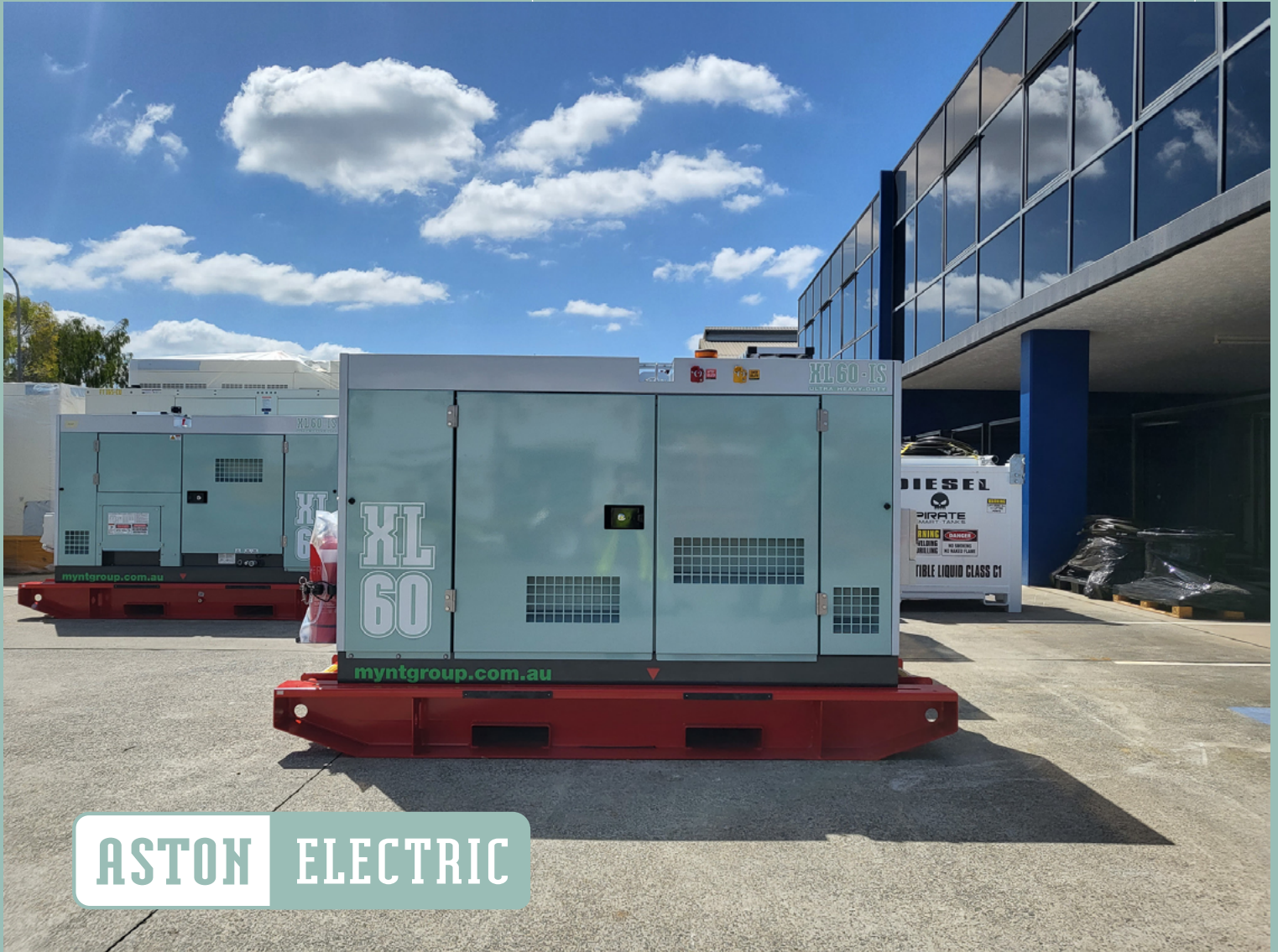


FOR SERIOUS FLEET OWNERS



**ASTON** ELECTRIC

Technical Specifications XL 60-IS

# FOR SERIOUS FLEET OWNERS

In the tradition of Japanese-Australian collaboration in manufacturing, Aston Electric generators have been designed with harsh Australian conditions in mind. Specifically built for mobile fleet use, Aston Electric is the reliable, high ROI generator of choice for fleet owners in rental, construction, mining, and industrial applications. Fuel efficient, compact, and silent, Aston Electric offers the best cradle to grave value of any generator on the market, for serious fleet owners.

## ASTON ELECTRIC

### Tough and Reliable

- Built specifically for harsh conditions
- Japanese manufacturing excellence
- Best cost of life ROI on the market
- Electro plated finish and anti-rain penetration

### Efficient and clean

- Fuel efficient Japanese engines
- High load start tolerance
- High light load tolerance
- Dual Voltage/Dual Frequency as standard

### Operator Friendly

- World class noise suppression
- Single side engine maintenance
- Easy access to cooling system
- Simple, low maintenance control system

### Safe and Compact

- Fully AS compliant
- Small footprint
- Centre lift
- Fork pocket skid

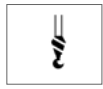


# XL 60-IS

The Worlds Best Generator  
**Available Features**



Bunded



Crane  
Lift Point



Emergency  
Stop



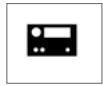
Fire  
Extengusier



Forklift  
Pockets



3 Way Fuel  
Value



AMF  
Controller



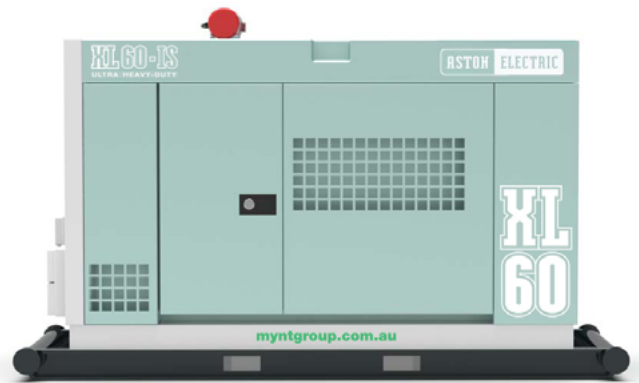
ATS  
Panel



Battery  
Isolator



Outlets  
Included



<b>Engine Make</b>	Isuzu
<b>Engine Model</b>	BBD4BG1T
<b>Frequency (Hz)</b>	50HZ
<b>Prime Rating</b>	50kVA
<b>Rated Output (kVA)</b>	65.4 (48.1)
<b>Voltage (V)</b>	50Hz : 200 or 380 or 400 or 415 , 60Hz : 220 or 440(Dual Voltage)
<b>Power Factor (%)</b>	0.8
<b>Class of rating</b>	Continuous
<b>No. of Cylinder</b>	4
<b>Cooling</b>	Direct Injection, Turbo charged
<b>Total Displacement (CU)</b>	4.329
<b>Rated Output PS(kW)</b>	65.4 (48.1)
<b>RPM</b>	1500RPM
<b>Fuel (L)</b>	Diesel Fuel Oil
<b>Fuel Tank Capacity (L)</b>	135
<b>Fuel Consumption (50/75%Load)</b>	8.60
<b>Lubricating Oil Capacity (L)</b>	14.00
<b>Cooling Water Capacity (L)</b>	15.0
<b>Battery Capacity (5hrs)</b>	80D26R(55)
<b>Dimensions (LxWxH) mm</b>	2,490 X 1,010 X 1,470
<b>Operating Mass (kg)</b>	1474.0
<b>Sound level (dBA)</b>	59.0



**FUCHTARDT** 



**ASTON ELECTRIC**



**PIRATE SMART-TANKS**



**SUMO**  
PLUG N PLAY GEAR



# Product Family

## GENERATORS 6KVA - 1500KVA



**STANDBY**



**STATIONARY**



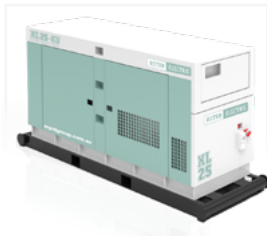
**MOBILE**



**TRAILER**



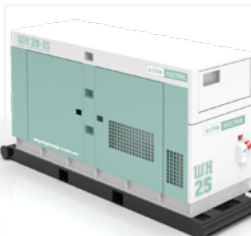
**CONTAINER**



**HEAVY DUTY**



**BIG TANK**



**WHISPER**



**WHISPER BIG TANK**



**INVERTER**

## FUEL CELLS 1KL - 100KL



**LIFT & SHIFT**



**STATIC STORAGE**



**TOW TANKS**



**BULK STORAGE**



**SMARTS**

## DISTRIBUTION 10A - 1000A



**HANDHELD**



**COMBO**



**STACKABLE**



**MASTER BOARD**



**LOAD BANKS**