

**Static Storage 8KL - 75 KL**

**CONTAINERISED , SELF BUNDED (DOUBLE WALL)**



Containerised Fully Bunded (Double Wall)



Storage and Dispensing of Diesel, Lubricants, Kerosene, Petrol & Waste Oil



Culus Listed, tested to UL requirements



**Smarter Fuel Cells**

Unique rounded rectangular tank profile maximises the storage capacity of the tank and provides the strength of a cylindrical design. CSC plated as 10ft / 20ft / 40ft / 48ft Standard Container. Lockable Container Doors with option for Roller Door. Supplied with all required statutory safety decals for your region of operation.

**Safer Fuel Cells**

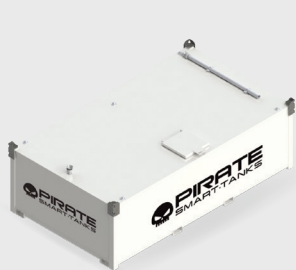
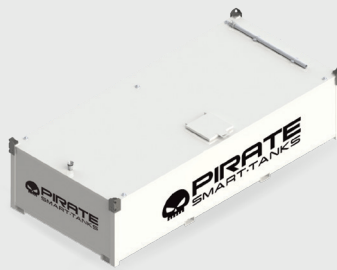
Integrated Bunded Pump Bay and Tank  
Access Platform design providing access to the full tank functionality in one convenient location on the tank. Vent that will relieve the gap between the two tanks in the event of a fire

**Adaptable Fuel Cells**

Full under tank visibility allows for regular visual inspect of the tank base and prevents the base rusting by providing for unrestricted air flow under the tank. 2 x 600mm manways with integrated tankaccess ladder assembly. Removable plate to allow the linking of multipl tanks in tank farm applications. Dispensing Equipment housed within a lockable bunded pump bay housing.

**Specifications**

Size	Capacity	Safe Fill Level	Lenght (mm)	Width (mm)	Height (mm)	Empty Weight (kg)	Container Footprint	Integrated Pump Bay
SS 8	8,000L	7700L	4600	2246	1235	2880	-	No
SS 10	10,000L	9000L	5750	2108	1210	3500	-	No
SS 12	12,000L	10,100L	3,000	2,438	2,896	4,500	10FT High Cube	Yes
SS 16	16,000L	15,000L	3,000	2,438	2,896	4,500	10FT High Cube	No
SS 30	30,000L	26,500L	6,058	2,438	2,896	7,500	20FT High Cube	Yes
SS 38	38,000L	33,500L	6,058	2,438	2,896	7,500	20FT High Cube	No
SS 65	65,000L	62,300L	12,192	2,438	2,896	14,500	40FT High Cube	Yes
SS 75	75,000L	69,000L	12,192	2,438	2,896	14,500	40FT High Cube	No

**Static Storage 8KL - 75 KL**
**Models**

**SS 8**

**SS 10**

**SS 12**

**SS 16**

**SS 30**

**SS 38**

**SS 65**

**SS 75**
**DN80**

DN80 Fill Point c/w Camlock Male Fitting / Dust Cap / Fire Safe Full Bore Ball Valve / Wafer Style Non Return Valve.

DN80 Suction Outlet c/w Anti Syphon Valve and Two Piece Full Bore Fire Safe Ball Valve.

DN80 Mechanical Overfill Valve + 12V Battery

Operated Overfill Alarm.

**Certifications**

- Certificate of Compliance#20120912-MH49221 for UL 142, ULC-S601.

- Decals manufactured to comply with AS1319 and AS2700.

• Fold out AS1657 designed and approved access ladder.

**Paint**

Paint Colour RAL9003 Signal White/ Tanks are sandblasted to SA2 Standard. Hempel Marine Paint 3 Stage process. Primer Hempadur 1530. 2nd Coat Hempadur HiBuild 4520. Final Coat Hempathane Enamel 55100 Finished dry